

Confidentiality Policy:

At McMurray Elementary, we value your privacy. Confidentiality is the foundation of our Elementary Student Assistance Program. For the purposes of helping a student, the ESAP team members may share information about a student with each other. This facilitates the process of gathering information, identifying barriers to learning, and implementing strategies and interventions for that student.



**Everyone Working Together
is the Key to the Puzzle!**

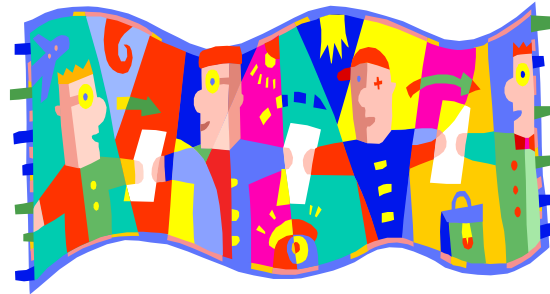
Contacting McMurray's ESAP team:

If you feel that your child may need help or to learn more about ESAP at McMurray, please call:

724-941-5020

Mrs. Brenda Gruhn
Extension 3009
School Counselor, Grades 4 and 5B
GruhnB@PT-SD.org

Ms. Stephanie Ali
Extension 3007
School Counselor, Grades 5A and 6
AliS@PT-SD.org



The Commonwealth of Pennsylvania
Departments of Education, Health, and
Public Welfare
www.sap.state.pa.us

The McMurray Elementary Student Assistance Program



**Are you worried
about your child?
ESAP is here to HELP!**

A guide for parents and families

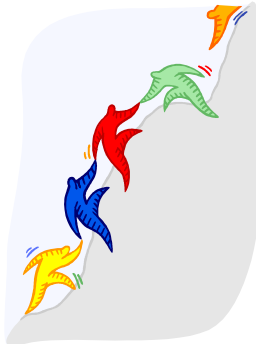
McMurray Elementary
Peters Township School District
626 East McMurray Road
McMurray, PA 15317

What is the Elementary Student Assistance Program?

The Elementary Student Assistance Program (ESAP) is a group process that helps identify concerns, gather information, brainstorm solutions, and monitor progress to assist our students.

The ESAP team is comprised of a core group of caring professionals who are trained in ESAP and include:

- School Administrators
- Teachers
- Counselors
- School Nurse
- Community Agency Liaisons

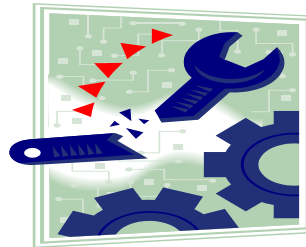


The ESAP team gathers information in order to identify difficulties that may be getting in the way of your child's success. ESAP will make suggestions, implement strategies, and follow up as needed.

The goal of the ESAP team is to work with you and other teachers and/or professionals who serve your child to assure his/her success.

Do You See Your Child Showing Any of These Behaviors?

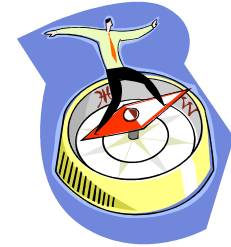
- Withdrawn from family, friends, and/or school
- Does not make friends, losing friends, or changing friends
- Acting aggressively, hurting others or self
- Unexplained physical injuries, talking about suicide and/or depression
- Hyperactive, easily distracted
- Lying
- Attendance, tardy issues
- Experimenting with or talking about drugs or alcohol
- Having academic difficulties
- Defying authority at home and/or school
- Reacting to a difficult life event



There may be times when you just don't know how to help your child. If your child is having trouble in or out of school, we can help you.

What if Someone Has Already Referred My Child to the Program?

First, know that your child was referred because someone is concerned about observable changes they are seeing in your child. Perhaps a teacher or friend has noticed changes in behavior and habits. Your observations of your child at home are also important.



The ESAP team will contact you as soon as a referral has been submitted. Before proceeding with the ESAP process, we will request that you sign an ESAP permission form. Once you sign, the ESAP team will begin to work with you and your child.

The ESAP team will help you find services and assistance in and outside of the school. **The ESAP team does NOT diagnose, treat, or refer your child for treatment.** We provide you with all the pertinent information, and **YOU MAKE THE CHOICE!**